

# CiteSeeing

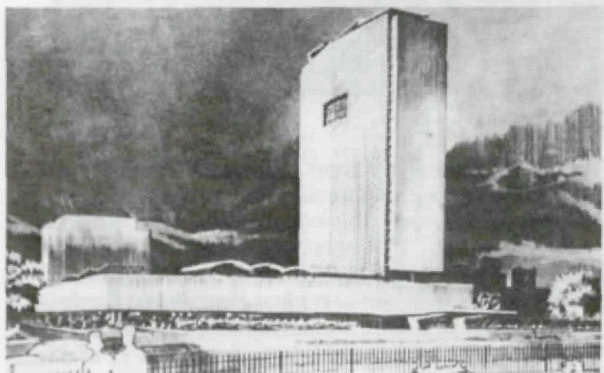
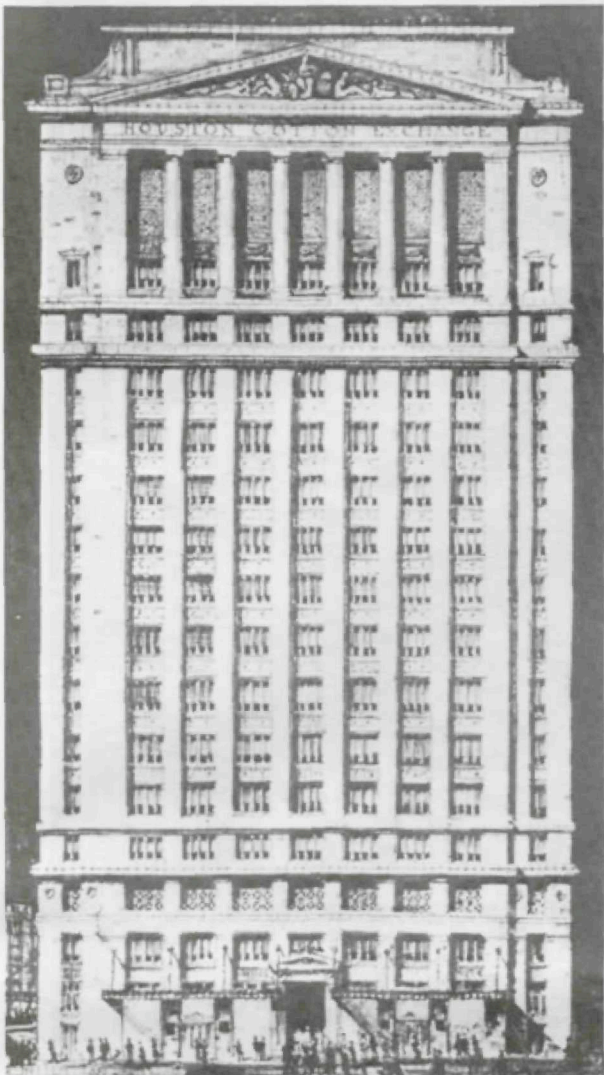
## Great Skyscrapers That Never Were—Or Have Yet To Become

In less than a century a Houston skyline has risen out of the coastal prairie. This artificial topographic formation shifts, re-forms, and increases in stature with amazing fluidity, as unstable and unpredictable as the expansive clay soil on which it is set, as mercurial as the atmosphere into which it ascends. But tall buildings, the con-

stituent elements of this formation, do not grow organically; they are made.

Some tall buildings, however, are envisioned but never realized. Out of this limbo of unfulfilled expectations remarkable proposals have arisen, but only on paper.

Illustrated are a series of towers that might have changed the profile of this formation, had not circumstances precluded their translation from image into building. Presented also are several proposed designs whose construction is still pending. Their profiles may yet reshape our view of the distant horizon.



Left, top: Houston Cotton Exchange Building, 1921, William Ward Watkin, architect. This 17-story tower was one of several projects submitted in competition. (Houston Metropolitan Research Center, Houston Public Library). Left, center: Adams Petroleum Center, 1954, Donald Barthelme and Hamilton Brown, architects. The 3-story base was completed in 1957; the 17-story tower was never built. (Houston Metropolitan Research Center, Houston Public Library). Left, bottom: Twin Towers Office Buildings, 1978, Johnson/Burgee Architects and S. I. Morris Associates, architects. Two 47-story office buildings planned for Cullen Center, Inc. (Photo by Richard Payne, AIA). Above: 1700 Travis, 1982, Morris\* Aubry Architects, architects. A 70-story office tower commissioned by Alfanco, Inc. (Morris\* Aubry Architects). Right, top: Office Building, 1982, Kohn Pedersen Fox Associates, architects. This 80-story office tower will be built adjacent to the Kellum-Noble House of 1847 in Sam Houston Park. (Kohn Pedersen Fox Associates) Right, center: Red Wolf Hotel, 1948, Kenneth Franzheim, architect. A 20-story hotel planned for a site in uptown Houston near the Texas Medical Center. (Houston Metropolitan Research Center, Houston Public Library) Right, bottom: Office Building, 1981, Kohn Pedersen Fox Associates, architects. A 40-story "annex" to the Federal Land Bank Building of 1929. (Kohn Pedersen Fox Associates)

