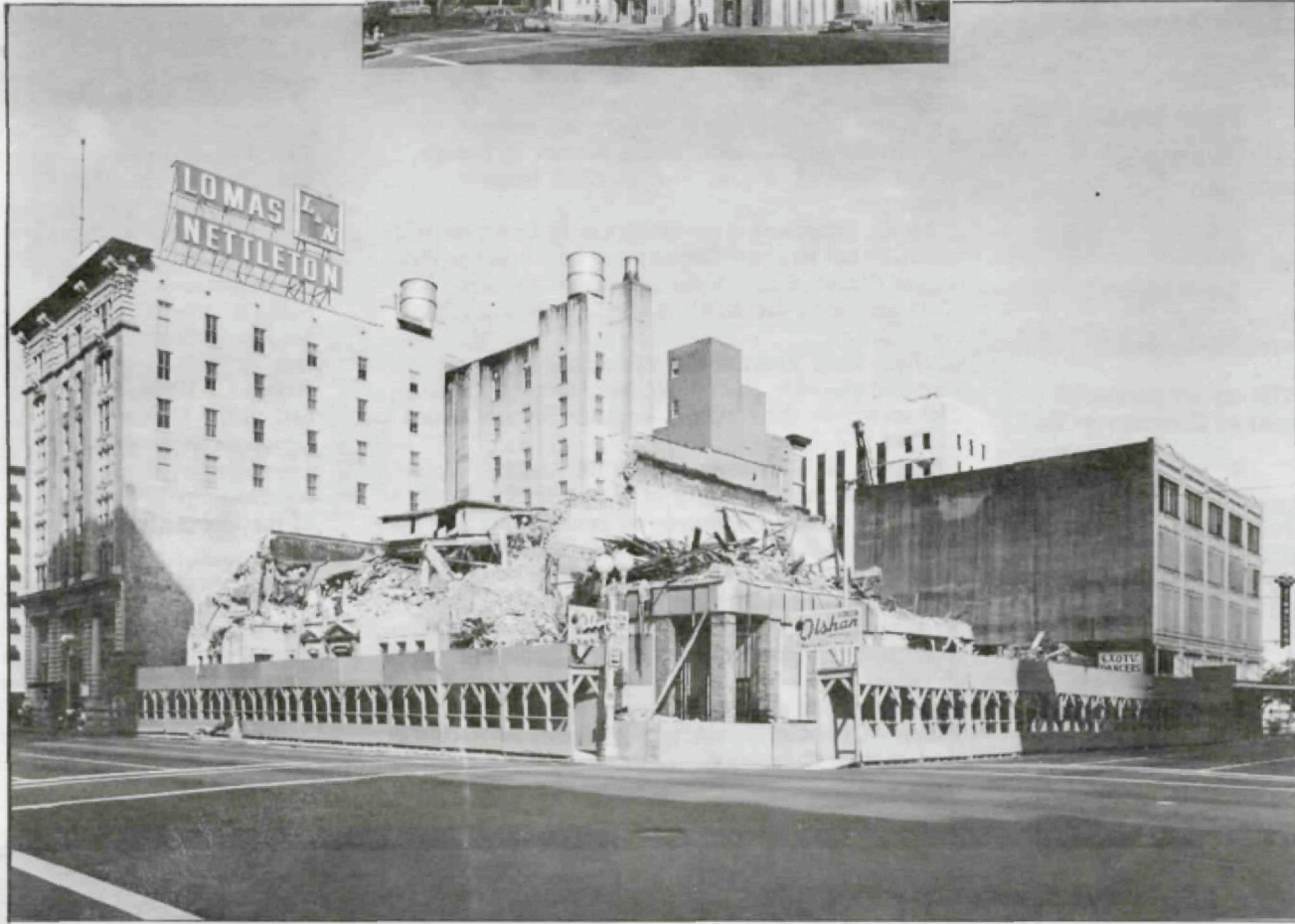
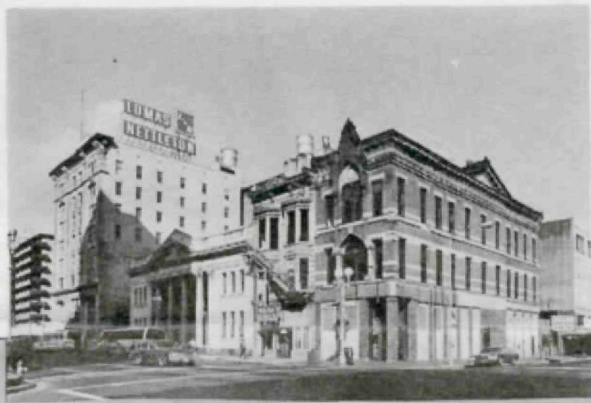


Crite



Historic Preservation in Downtown Houston

Also in this issue: Philip Johnson's UH Architecture Building

InCite

- 3 Citelines
- 6 New Texas Country Clubs
- 6 Playing the Recreational Standards Game
- 8 Much Ledoux About Nothing?
- 10 Easement Down the Road —
Good News for Preservation?
- 12 Cite Seeing: Buildings and Places that
Ought to Be Recognized and Preserved
- 15 Historic Preservation Incentives — In Houston?
- 16 Citeations

Coming in the Fall Issue:

The Development Ordinance and Its Discontents
The Impact of Tall Buildings

Cite

Publication of this issue of CITE is supported in part by a grant from the Texas Commission on the Arts and the National Endowment for the Arts.

Editorial Board

Stephen Fox
Chairman
Herman Dyal, Jr.
John Kaliski
Karl Laurence Kilian
Mac McManus
O. Jack Mitchell

W. O. Neuhaus, III
Peter C. Papademetriou
William F. Stern
Drexel Turner
Bruce C. Webb
Lorraine Wild
Gordon G. Wittenberg

Guest Editor: Stephen Fox
Contributing Editor: Joel Warren Barna
Editorial Consultant: Kathleen Much
Design Directors: Herman Dyal, Jr.
Lorraine Wild
Design Associates: Peter H. Boyle
Augusta Barone

**Rice Design Alliance
Board of Directors 1983-1984**

William F. Stern <i>President</i>	Daniel K. Hedges John Kaliski
W. James Murdaugh <i>President Elect</i>	Richard Keating Burdette Keeland
Herman Dyal, Jr. <i>Vice President</i>	Karl Laurence Kilian Truett Latimer
Barrie Scardino <i>Secretary</i>	James L. Marshall, Jr. O. Jack Mitchell
John T. Hannah <i>Treasurer</i>	W. O. Neuhaus, III Peter C. Papademetriou
Judy L. Allen	Macey Reasoner
Sally G. Avery	Andrew John Rudnick
Howard Barnstone	Ruth Sine
Paul G. Bell	Margaret C. Skidmore
Anne S. Bohnn	Drexel Turner
Giorgio Borlenghi	Bruce C. Webb
Raymond D. Brochstein	Isabel B. Wilson
Joseph P. Colaco	Tom Redyard Wilson
Austin Coleman	Gordon G. Wittenberg
Leslie Barry Davidson	Melanie Young
Stephen Fox	<i>Executive Director</i>
LaNeil Gregory	Lorraine P. Roberts
Elizabeth Griffin	<i>Secretary</i>
Robert E. Griffin	

Corporate Members of the Rice Design Alliance

Anchorage Foundation of Texas
Associated General Contractors of America, Inc.
The Avery Family Charitable Trust
W. S. Bellows Construction Corporation
Brochsteins, Inc.
Century Development Corporation
The Farb Companies
Gentry, Haynes and Whaley, Inc.
John Hansen Investment Builder
Gerald D. Hines Interests
R. Michael Huffington
Lloyd Jones Brewer and Associates, Inc.
Walter P. Moore and Associates, Inc.
PIC Realty
The Russo Companies
Skidmore, Owings and Merrill
3D/International
Turner Construction Company of Texas
Urban Investment and Development Company

The opinions expressed in CITE do not necessarily represent the views of the Board of Directors of the Rice Design Alliance.

CITE	Rates
Advertising Information	\$100 - eighth page
Telephone:	\$200 - quarter page
(713) 524-6297	\$400 - half page
	\$650 - full page

OverCITE

In the report on the Alfred C. Finn drawings exhibition in the spring issue, the information that Jesse H. Jones owned A. C. Finn's architectural practice was attributed incorrectly to Dorothy L. Victor. CITE regrets the error.



The real cause of Hurricane Alicia damage revealed — see Big Cité Beat, page 3 (Photo by Paul Hester)

Notes on Contributors

Minnette B. Boesel has a M.S. degree in Historic Preservation from the School of Architecture and Planning at Columbia University. With ten years experience in cultural resource management, she is past Chairman of Preservation Action, the national lobby for historic preservation, and a partner in Preservation Services, a consulting firm for historic properties.

John C. Ferguson is an architectural historian with the National Register Department of the Texas Historical Commission. A native of New Orleans, he is co-author of the AIA's *A Guide to New Orleans Architecture*.

Martha Doty Freeman is a principal in the architecture and planning firm of Walker, Doty & Freeman. She serves on the National Register Review Board for the State of Texas.

Elizabeth S. Glassman teaches the history of photography at the University of Houston. She is the author of several catalogues on printmaking and photography, including *Cliché-verre: Hand-Drawn, Light-Printed, A Survey of the Medium from 1839 to the Present* (Detroit Institute of Art, 1980) and *Reading Prints: A Selection from the Menil Collection, 16th to 19th centuries* (Menil Foundation Series, in press).

Paul Hester is a Houston photographer.

Mark A. Hewitt is Assistant Professor of Architecture at Rice University.

John Kaliski is Assistant Professor of Architecture at the University of Houston.

Paul Kennon is President and a Design Principal of CRS/Caudill Rowlett Scott. He formerly was Associate Director of the School of Architecture at Rice University and a Senior Designer for Eero Saarinen and Associates.

Janet O'Brien is a Houston architect.

Peter G. Rowe is Professor of Architecture at Rice University and Director of the School of Architecture.

Sally S. Victor is a partner in the Austin firm of Victor and Victor Consultants, Inc. Her firm specializes in historic research and planning.

Bruce C. Webb is Associate Professor of Architecture at the University of Houston and Director of Graduate Studies of the College of Architecture.

Lorraine Wild is a Houston graphic designer. She teaches graphic design at the College of Architecture of the University of Houston.

CITE welcomes unsolicited manuscripts. Authors take full responsibility for securing required consents and releases and for the authenticity of their articles. All manuscripts will be considered by the Editorial Board. Suggestions for topics are also welcome. Address correspondence to: Managing Editor, CITE, Rice Design Alliance, P. O. Box 1892, Houston, Texas 77251.

BRAZOS BOOKSTORE

ARCHITECTURE & ART

FICTION & POETRY

HISTORY & TRAVEL

2314 BISSONNET STREET,
AT GREENBRIAR
(713) 523-0701

MONDAY-FRIDAY, 10-6
SATURDAY, 10-5
SUNDAY, 11-3

We're big on small business...

Patricia S. Mahan
BOOKKEEPING SERVICES
2472 Bolsover • Suite 361
522-1529