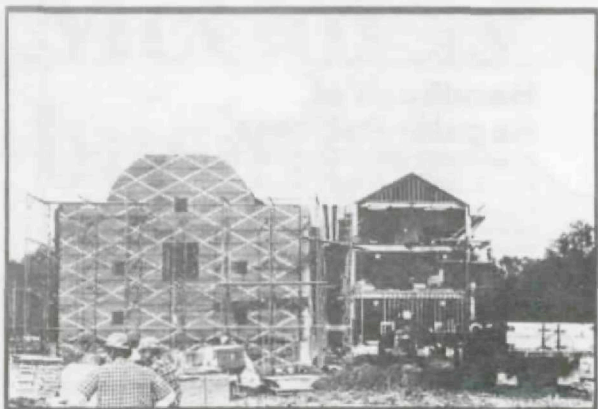


Crite



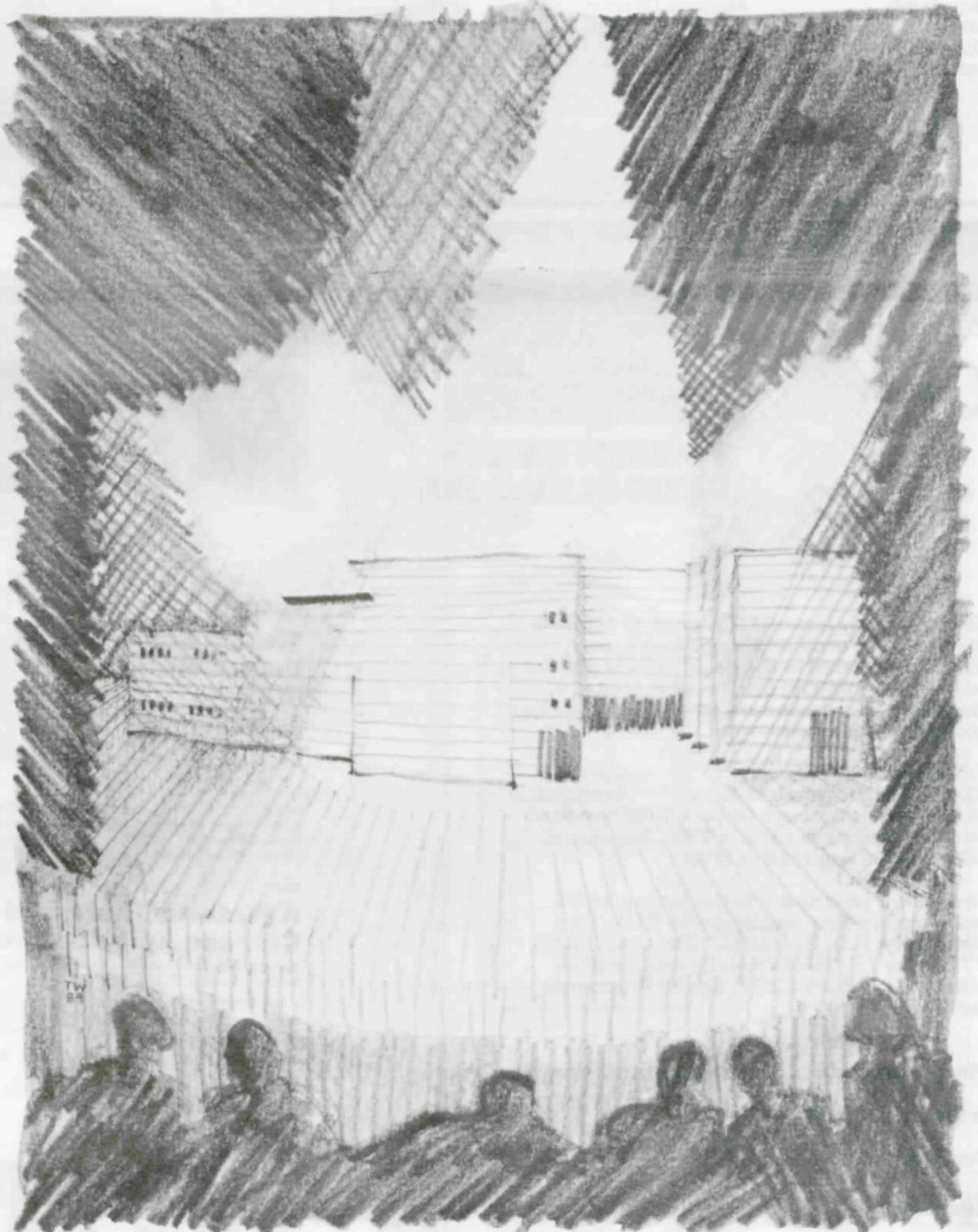
The Development Ordinance and Its Discontents

By Joel Warren Barna



Pelli Crams Old and New Ideas Into Rice's Future

By Peter C. Papademetriou



A Report on the Wortham Theater Center

By Stephen Fox

InCite

- 3 Citelines
- 5 The Development Ordinance and Its Discontents
- 8 A Report on the Wortham Theater Center
- 14 Pelli Crams Old and New Ideas Into Rice's Future
- 16 Citations
- 22 Rice Design Alliance Annual Report 1982-1983

Coming in the Spring Issue:

Dreams of Houston in the Year 2000
Houston Skyscrapers: The Impact of Tall Buildings

Cite

Publication of this issue of *Cite* is supported in part by a grant from the Texas Commission on the Arts and the National Endowment for the Arts.

Editorial Committee

- | | |
|---|---|
| Stephen Fox
<i>Chairman</i> | W. James Murdaugh
W. O. Neuhaus, III
Peter C. Papademetriou
Andrew John Rudnick
William F. Stern
Drexel Turner
Bruce C. Webb
Gordon G. Wittenberg
Melanie Young |
| Herman Dyal, Jr.
Mark Hewitt
John Kaliski
Richard Keating
Karl Laurence Kilian
Mac McManus
O. Jack Mitchell | |

Guest Editor: Stephen Fox
Contributing Editor: Joel Warren Barna
Managing Editor: Linda Leigh Sylvan
Design Director: Herman Dyal, Jr.
Graphic Designer: Lorraine Wild
Design Associate: Peter H. Boyle

**Rice Design Alliance
Board of Directors 1983-1984**

- | | |
|---|--|
| William F. Stern
<i>President</i> | Daniel K. Hedges
John Kaliski |
| W. James Murdaugh
<i>President Elect</i> | Richard Keating
Burdette Keeland |
| Herman Dyal, Jr.
<i>Vice President</i> | Karl Laurence Kilian
Truett Latimer |
| Barrie Scardino
<i>Secretary</i> | James L. Marshall, Jr.
O. Jack Mitchell |
| John T. Hannah
<i>Treasurer</i> | W. O. Neuhaus, III
Peter C. Papademetriou
Macey Reasoner |
| Judy L. Allen | Andrew John Rudnick
Ruth Sine |
| Sally G. Avery | Margaret C. Skidmore |
| Howard Barnstone | Drexel Turner |
| Paul G. Bell | Bruce C. Webb |
| Anne S. Bohnn | Isabel B. Wilson |
| Giorgio Borlenghi | Tom Redyard Wilson |
| Raymond D. Brochstein | Gordon G. Wittenberg |
| Joseph P. Colaco | |
| Austin Coleman | Melanie Young |
| Leslie Barry Davidson | <i>Executive Director</i> |
| Stephen Fox | Lorraine P. Roberts |
| LaNeil Gregory | <i>Secretary</i> |
| Elizabeth Griffin | |
| Robert E. Griffin | |

Corporate Members of the Rice Design Alliance

- Anchorage Foundation, Inc.
- Associated General Contractors of America, Inc.
- The Avery Family Charitable Trust
- P. G. Bell Company
- W. S. Bellows Construction Corporation
- Lan Bentsen Interests
- Brochsteins, Inc.
- Century Development Corporation
- The Farb Companies
- John Hansen Investment Builder
- Gerald D. Hines Interests
- R. Michael Huffington
- Interfin Corporation
- Lloyd Jones Brewer and Associates, Inc.
- Moody-Rambin Interests
- Walter P. Moore and Associates, Inc.
- W. O. Neuhaus Associates
- PIC Realty
- The Russo Companies
- Skidmore, Owings and Merrill
- William F. Stern and Associates
- RepublicBank Houston
- 3D/International
- Turner Construction Company of Texas
- Urban Investment and Development Company of Texas, Inc.

Notes on Contributors

Elizabeth S. Glassman is an art historian and a partner in the firm of Glassman and Lorenzo, Cultural Planners. **Paul Hester** is a professional photographer who exhibits at the Graham Gallery and writes book reviews for *Image*, published by the Houston Center for Photography. **Janet O'Brien** is a Houston architect. She was managing editor of the first issue of *Threshold*, the journal of the School of Architecture at the University of Illinois at Chicago. **Peter C. Papademetriou** is a Houston architect and associate professor of architecture at Rice University. He is editor of *The Journal of Architectural Education* and southwest regional correspondent for *Progressive Architecture*. **Paul W. Schieffer** practices architecture in Dallas where he also teaches at El Centro College.

Cite welcomes unsolicited manuscripts. Authors take full responsibility for securing required consents and releases and for the authenticity of their articles. All manuscripts will be considered by the Editorial Board. Suggestions for topics are also welcome. Address correspondence to: Managing Editor, *Cite*, Rice Design Alliance, P. O. Box 1892, Houston, Texas 77251.

The opinions expressed in *Cite* do not necessarily represent the views of the Board of Directors of the Rice Design Alliance.

Advertise in Cite

Each quarterly issue of *Cite* goes to 10,000 readers — to architects, designers, and others interested in the quality of life and the built environment in the Houston area. *Cite* also reaches selected universities, museums, and institutions nationwide.

Cite ad rates and sizes:
\$100 — eighth page (4³/₄" x 3³/₄", horizontal)
\$200 — quarter page (4³/₄" x 7⁷/₈", vertical)
\$400 — half page (9⁷/₈" x 7⁷/₈", horizontal)
\$650 — full page (16" x 9⁷/₈")

To reserve your space in the Spring 1984 issue, return the form below to RDA, Rice University, P.O. Box 1892, Houston, Texas 77251 by 12 March 1984. Or call the RDA office, (713) 524-6297. Special discounts available.

Please reserve a _____ page advertisement in the _____ issue of *Cite*.

Company: _____

Address: _____

Telephone: _____

Contact: _____

Signature: _____

Date _____



The Amsterdam School
Dutch Expressionist Architecture, 1915-1930
edited by Wim de Wit

Led by the talented Michel de Klerk, the Amsterdam School produced some of the most original and daring designs of any of the European avant-garde movements in the halcyon days of modernism. This book documents all of the group's major projects, from renderings of furniture and interiors to completed buildings.
172 pp. 132 illus., 12 pp. color \$25.00

The De Stijl Environment
Nancy J. Troy

The fascinating bold environments of this Dutch rationalist movement—among them a Huszar bedroom of stripes and squares, a dance hall by Theo van Doesburg, and Mondrian's studio—are discussed and illustrated in this large-format book. "Nancy Troy offers a brilliant analysis of De Stijl theory and practice that will add immeasurably to our understanding of one of the most significant movements in twentieth-century art."—Helen Searing, *Smith College*
254 pp. 89 illus., 12 color \$45.00

On the Edge of the World
Four Architects in San Francisco at the Turn of the Century
Richard W. Longstreth

"An unusually impressive achievement. In recounting the careers of Ernest Coxhead, Willis Polk, A. C. Schweinfurth and Bernard Maybeck, Mr. Longstreth has written both a story of California and a story of architecture, with a text that is clear, strong and consistently interesting."—Paul Goldberg, *The New York Times Book Review*
The Architectural History Foundation American Monograph Series
472 pp. 271 illus. \$40.00

Now available in paperback

A Pictorial History of Chinese Architecture
A Study of the Development of Its Structural System and the Evolution of Its Types
Liang Ssu-ch'eng
edited and with a Foreword by Wilma Fairbank

200 pp. 143 halftones, 62 architectural drawings \$30.00

Campus
An American Planning Tradition
Paul Venable Turner

A chronological and typological survey of work done by many of America's most distinguished architects and planners on the nation's college campuses from Colonial times to the present.
The Architectural History Foundation Book
384 pp. 309 illus. \$35.00

Handbook of Regular Patterns
An Introduction to Symmetry in Two Dimensions
Peter S. Stevens

Using a fascinating collection of regular patterns from many cultures and periods, Peter Stevens demonstrates how designers and artists, whether students or professionals, can play limitless variations upon a few fundamental patterns and structural arrangements.
416 pp. 875 illus. \$17.50

Write for our current architecture and design catalog

The MIT Press

28 Carleton Street, Cambridge, MA 02142