

Guest Editors
Nonya Grenader
Barrie Scardino

Editorial Committee
Chairman
Barry Moore

Larry Albert
Thomas Colbert
Terrence Doody
Stephen Fox
Nonya Grenader
Lynn M. Herbert
Karl Kilian
Ben Koush
Rafael Longoria
Danny Marc Samuels
Barrie Scardino
Christof Spieler
William F. Stern
Rives T. Taylor
Bruce C. Webb

Managing Editor
Lisa Simon

Graphic Design
Minor Design Group

Photography
Paul Hester

Advertising and Marketing
Sara O. Tovar

Rice Design Alliance
Board of Directors

President
Lawrence F. Lander

President-Elect
Barbara J. Amelio

Vice President
David T. George

Treasurer
Chris A. Hudson

Secretary
Judith K. McClain

Jory Alexander
Marilyn G. Archer
Carolyn S. Brewer
Barbara White Bryson
John J. Casbarian
Andrea Cramer
Steve Dishman
Jessica C. Farrar
Robert R. Fretz, Jr.
Dietmar E. Froehlich
Chuck Gremillion
Nonya Grenader
Kathy Heard
Lynn M. Herbert
Lonnie Hoogeboom
Andrew F. Icken
Donna Kacmar
Katherine King
D. Jean Krchnak
Karen Lantz
Kay Lentz
Lars Lerup
Rafael Longoria
Robert McClain
Joan B. Miller
Barry Moore
John D. Mooz
Michael Morton
Jane B. Page
Stewart O. Robinson
William C. Ross
Lauren Rotter
Jeffrey D. Ryan
Danny Marc Samuels
Barrie Scardino
Louis H. Skidmore Jr.
Anita Webber Smith
David Spaw
William F. Stern
Cindi Strauss
S. Hill Swift III
Randall Walker
Bruce C. Webb
Joe Douglas Webb
Larry E. Whaley

Executive Director
Linda L. Sylvan

Program Administrator
Carrie Rushing

Membership Coordinator
Mary Swift

David Bush is director of programs and information at the Greater Houston Preservation Alliance.

Terrence Doody is a professor in the English Department at Rice University.

Carolyn Foug is an architect working in Houston.

Nonya Grenader, an architect, is a Professor in Practice at the Rice University School of Architecture.

Houstonian Maria Morris Hambourg is the daughter of Rice-trained architect S. I. Morris. She founded and directed the Department of Photography at The Metropolitan Museum of Art, New York, in the 1990s and remains a Consulting Curator there.

Paul Hester is a principal of the photography firm Hester+Hardaway and

teaches photography in the Department of Visual Arts, Rice University.

Christopher Hight is an assistant professor at the Rice School of Architecture, where he is researching emerging electronic and material urbanisms.

Paul Homeyer is an architect specializing in historic preservation with Gensler and serves on the board of directors of the Greater Houston Preservation Alliance.

Ben Koush works at DMJM Rottet in Houston.

Sean Lally is a visiting lecturer at the Rice School of Architecture and co-editor on the forthcoming Architecture at Rice book *SOFTSPACE*.

Rafael Longoria is a principal in the architecture firm of Longoria/Peters and teaches at the University of Houston's Gerald D. Hines College of Architecture.

Anna Mod is a historic preservation consultant in Houston and an adjunct professor at Prairie View A&M University.

Barrie Scardino is executive director of AIA Houston and a former managing editor of *Cite*.

Lisa Simon is managing editor of *Cite*.

Christof Spieler is a senior associate at Matrix Structural Engineers.

Rives T. Taylor is a consultant and the Kirksey Faculty Fellow in the University of Houston's Gerald D. Hines College of Architecture.

Bruce C. Webb is a professor in the University of Houston's Gerald D. Hines College of Architecture.

Cite

The Architecture
and Design Review
of Houston

A Publication of
the Rice Design Alliance

63: Spring 2005

Cite (ISSN: 8755-0415) is published quarterly by the Rice Design Alliance, Rice University, 6100 Main Street, Houston, Texas 77005-1892. Individual subscriptions: U.S. and its possessions: \$15 for one year, \$25 for two years. Foreign: \$30 for one year, \$50 for two years.

Cite is indexed in the Avery Index to Architectural Periodicals.

Copyright © 2005 by the Rice Design Alliance. Reproduction of all or part of editorial content

without permission is strictly prohibited. The opinions expressed in *Cite* do not necessarily represent the views of the board of directors of the Rice Design Alliance. Publication of this issue is supported in part by grants from the Susan Vaughan Foundation, the City of Houston through the Cultural Arts Council of Houston/Harris County, and the Texas Commission for the Arts.

The Rice Design Alliance, established in 1972, is a nonprofit educational organization dedicated to the advancement of architecture and design.

WebCite: www.rda.rice.edu

RDA Corporate Sponsors

A & E — The Graphics Complex
Anchorage Foundation of Texas
Andrews Kurth L.L.P.
Architectural Floors
Baker Botts L.L.P.
W. S. Bellows Construction Corp.
Berger Iron Works, Inc.
Binswanger/Conine & Robinson
Brochsteins Inc.
Builders West Inc.
Cameron Management
Carter & Burgess, Inc.
CenterPoint Energy, Inc.
Century Millwork
Consulate General of the Federal Republic of Germany
Continental Airlines, Inc.
Creative Flooring Resources
Crescent Real Estate Equities, Ltd.
DMJM Rottet
Debner + Company
Elegant Additions
fd2s inc.
FKP Architects
Fretz Construction Company
Gensler
Gilbane
Marli Andrade and Alfred C. Glassell III
Glassman Shoemaker Maldonado Architects Inc.
Graves Mechanical Inc.
Hammes Company Healthcare
Haynes Whaley Associates, Inc.
Hellmuth, Obata + Kassabaum
JCS/Jimenez Contract Services, Inc.
Jackson and Company
KUHFF 88.7 FM
Kirksey
MGC Inc.
Manhattan Construction Company
McCoy Workplace Solutions
Metropolitan Transit Authority
Miner-Dederick Constructors, Inc.
MKG Art Management
Moorhouse Construction

Morris Architects, Inc.
O'Donnell/Snyder Construction Inc.
The OFIS
PDG Architects
PGAL
Planning Design Research Corporation
Powers Brown Architecture
Renaissance Builders, Inc.
Ridgway's
SWA Group
Louisa Stude Sarofim
Satterfield & Pontikes Construction, Inc.
Schenck and Company
Robert Shaw Architectural Woodwork
SpawGlass Construction Corp.
SpawMaxwell Company
Steelcase Inc.
Julien J. Studley, Inc.
TAS Commercial Concrete Const. LP
Tellepsen Builders, L.P.
Thomsen Co., Inc.
Todd Land Company
Trammell Crow Company
Trelligence
Trione & Gordon/CBRE
Turner Construction Company
Vanguard Environments, Inc.
Vaughn Construction
Walter P. Moore
The Warwick Hotel
Watkins Hamilton Ross Architects, Inc.
Webb Architects
Weingarten Realty Management
Wulfe & Co.
Wylie & Associates, Inc.

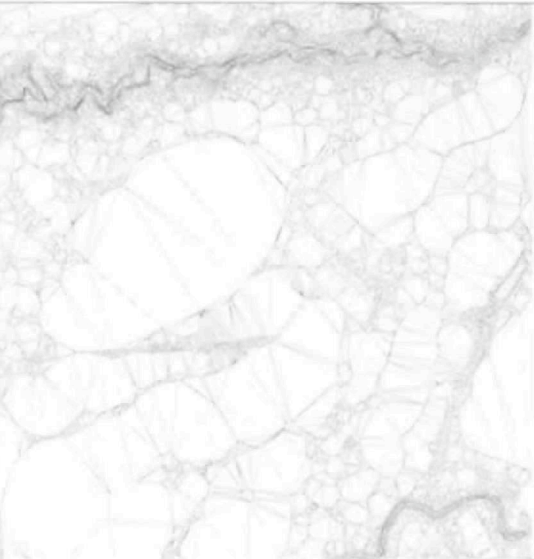
RDA Corporate Members

American Construction Investigation, Ltd.
Anchorage Foundation of Texas
S.L. Anderson Company
Associated General Contractors, Houston Chapter
Brand+Allen Architects, Inc.
Brookstone, L.P.
Browne Penland McGregor Stephens Architects Inc.

The Office of James Burnett
Burns DeLatte & McCoy, Inc.
Cokinos, Bosien & Young
Coordinated Moving Systems, Inc.
L. Barry Davidson Architects AIA, Inc.
Rey de la Reza Architects, Inc.
Francois de Menil, Architect, P.C.
J. E. Dunn Construction
Gowan Inc.
Greenwood King Properties
John Hansen Investment Builder
Herman Miller, Inc.
The Environmentalists
Knudson & Associates
The Lentz Group Inc.
Lesley & Associates, Inc.
Lighting Unlimited
Lockwood, Andrews & Newnam
m Architects
McDugald-Steele
The Marek Companies
Matrix/Structural Engineers, Inc.
MetroNational
Milam & Co. Painting, Inc.
Mission Constructors, Inc.
Montalbano Lumber Co., Inc.
I. A. Naman + Associates
W. O. Neuhaus Associates
Office Pavilion
O'Neill Hill
Perkins & Will
Raven Mechanical, LP
Redding Linden Burr, LLC
Charlotte A. Rothwell
Smith Seckman Reid, Inc.
Stern and Bucek Architects
3D/I
Tribble & Stephens Constructors, Ltd.
Wells Design/Jerry Jeanmard, Inc.
Windham Builders



Cite



contents

6	Man in Motion RDA celebrates its 18th annual gala.
8	Calendar
10	CiteLines: Plaza Hotel transformed into medical offices Austin votes for suburban rail Goodbye, Town and Country 2004 Good Brick Awards Neuhaus House named modern landmark
15	Endangered City: Slipcovered downtown
18	Friends in High Places High-rise living comes to Houston. BRUCE C. WEBB
23	6 rms hou vu Looking for a Houston high rise. BARRIE SCARDINO
24	Freeway as Landscape Living on the edge affords a new view. NONYA GRENADER
28	East Meets West in the North Heights The Nguyen family compound makes the traditional transparent. RAFAEL LONGORIA
32	Breaking the Box The Frank Lloyd Wright Foundation gave modern architecture wheels. ANNA MOD
34	Houston's Hydrotopographic Horizon Where the city's water drains to—and from. CHRISTOPHER HIGHT AND SEAN LALLY
36	ArtCiting: <i>Cartier Design Viewed by Ettore Sottsass</i> REVIEW BY CAROLYN FOUG
38	CiteReading: <i>Sticks and Stones: Architectural America; Robert Polidori's Metropolis</i> REVIEW BY MARIA MORRIS HAMBURG <i>Up from Zero: Politics, Architecture, and the Rebuilding of New York</i> REVIEW BY TERRENCE DOODY
42	HindCite: Transcendent Shelter LISA SIMON

Cover: Bounded at the top by Buffalo Bayou and at the bottom by Brays Bayou, this map of Houston was created using calculated water run-off speeds. See "Houston's Hydrotopographic Horizon," page 34.