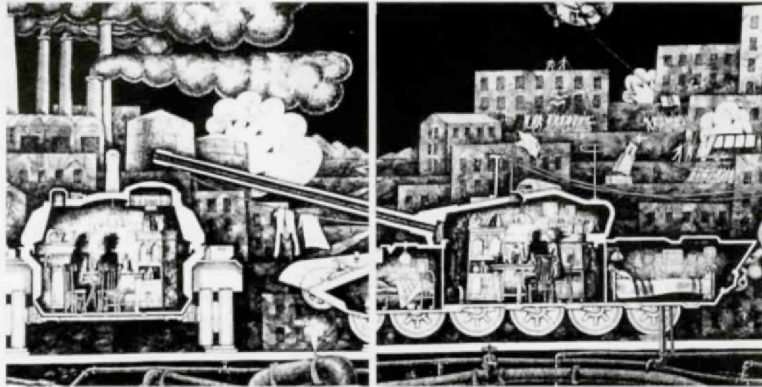


Postcards From the Edge

Machines for Living

Russian architect Alexander Shulyakovsky's post-revolutionary proposal for emergency housing in the former Soviet Union would convert tanks into ultra-efficiency *machines à habiter*. Presented as a poster page in a glossy publication of amazing designs with which the Russian delegation blitzed the recent International Design for Extreme Environments Assembly (IDEEA) at the University of Houston, Shulyakovsky's track house comes in several models: a two-bedroom in the Russian T-72; a big two-bedroom in the 122mm self-propelled howitzer; and a one-bedroom in the small infantry support tank.



Rubble Rouser

What may in fact be Houston's BEST-known building has taken a fall for real. SITE's Indeterminate Façade building at 10765 Kingspoint – a faultless wonder realized in 1975 as the first of a series of playful storefronts for Best Products, the now-crumbling Richmond, Virginia, catalogue store chain – has been closed and offered for sale as part of Best's retrenchment program. Its jagged edge now scarcely visible from I-45, the I.F.'s future seems iffy in the extreme, failing a last-minute offer from the Society for Commercial Archaeology or its Gulf Coast equivalent.

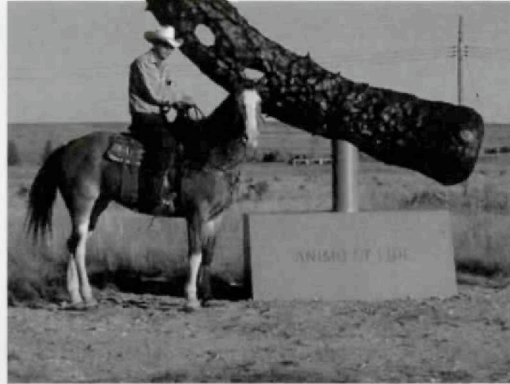


© Paul Hester 1992

BigCitéBeat

- Houston City Council's point man for zoning and consummate urban strategist, **Jim Greenwood**, received in May the **American Planning Association's** 1992 Distinguished Leadership Award for elected officials for his efforts to bring comprehensive planning and zoning to Houston.
- The **Museum of Fine Arts, Houston**, has chosen **Rafael Moneo** as architect for its expansion east of Main Street. Moneo, who practices in Madrid, designed the National Museum of Roman Art in Merida and the Davis Art Museum at Wellesley College, now nearing completion. Also shortlisted were **Venturi, Scott Brown & Associates**; **Norman Foster**; and **Tadao Ando**. The proposed 150,000-square-foot complex will house the museum's collections of photography, 20th-century art, and decorative arts.
- **Lake/Flato Architects** of San Antonio has been selected to prepare a plan for the campus of the **Laguna Gloria Art Museum**, Austin.

- **Congregation Beth Israel** has retained San Francisco architect **Daniel Solomon** to design a memorial chapel and master plan for its cemetery.
- Still lacking a preservation ordinance, Houston recently lost two 19th-century landmarks – the **Kennedy Corner** and **Baker buildings** adjoining Market Square. Also biting the dust was **O'Neil Ford** and **Richard Colley's** 1955 building for **Texas Instruments** at the corner of Buffalo Speedway and Richmond Avenue.
- The Spanish colonial revival **Star Engraving Building** on Allen Parkway is about to lose its major tenants, **Stages** and the **Children's Museum**, and will be folded into a condominium project.
- On view through July at the **Julia Ideson Building** of the **Houston Public Library** downtown are photographs from the Houston Metropolitan Research Center collected in the process of researching the recently published *Houston's Forgotten Heritage* (see *Cite*, Fall 1991).



Jim Tiebout

End of the Trail

Claes Oldenburg and Coosje van Bruggen's *Monument to the Last Horse* – a project of the Chinati Foundation – is at peace at last in Marfa, Texas, having spent last summer curbside on Madison Avenue in front of the Seagram Building. Marfa's arc-type is a dead ringer for the real thing: Louie, the oldest horse in the 1st Cavalry, shot in 1932 when the unit left Marfa's Fort D. A. Russell to be mechanized – and no small hooper, judging from the footwear.



Phil Schermeister

Meander Thrall

The little patch of cactus the urban cowboy calls the trail along the Rillito River in Tucson is part of a now-standard 50-foot right-of-way purchased by the Pima County Department of Transportation and the Pima County Flood Control District to send slivers down the spines of the county's mostly conceptual waterways.

Snow Biz

Denial is where you find it. Astro-sno, untold tons of melt-at-your-feet white slush spun off by the world's largest frozen margarita machine, helped to lighten up if not totally chill out AstroWorld's never-in-season Christmas observance, though it paled in comparison to Bert Long's similarly anticlimatic Technicolor ice sculptures, installed in front of the Contemporary Arts Museum in mid-January. Order your CiteGeist Christmas cards early this year.



© Paul Hester 1992