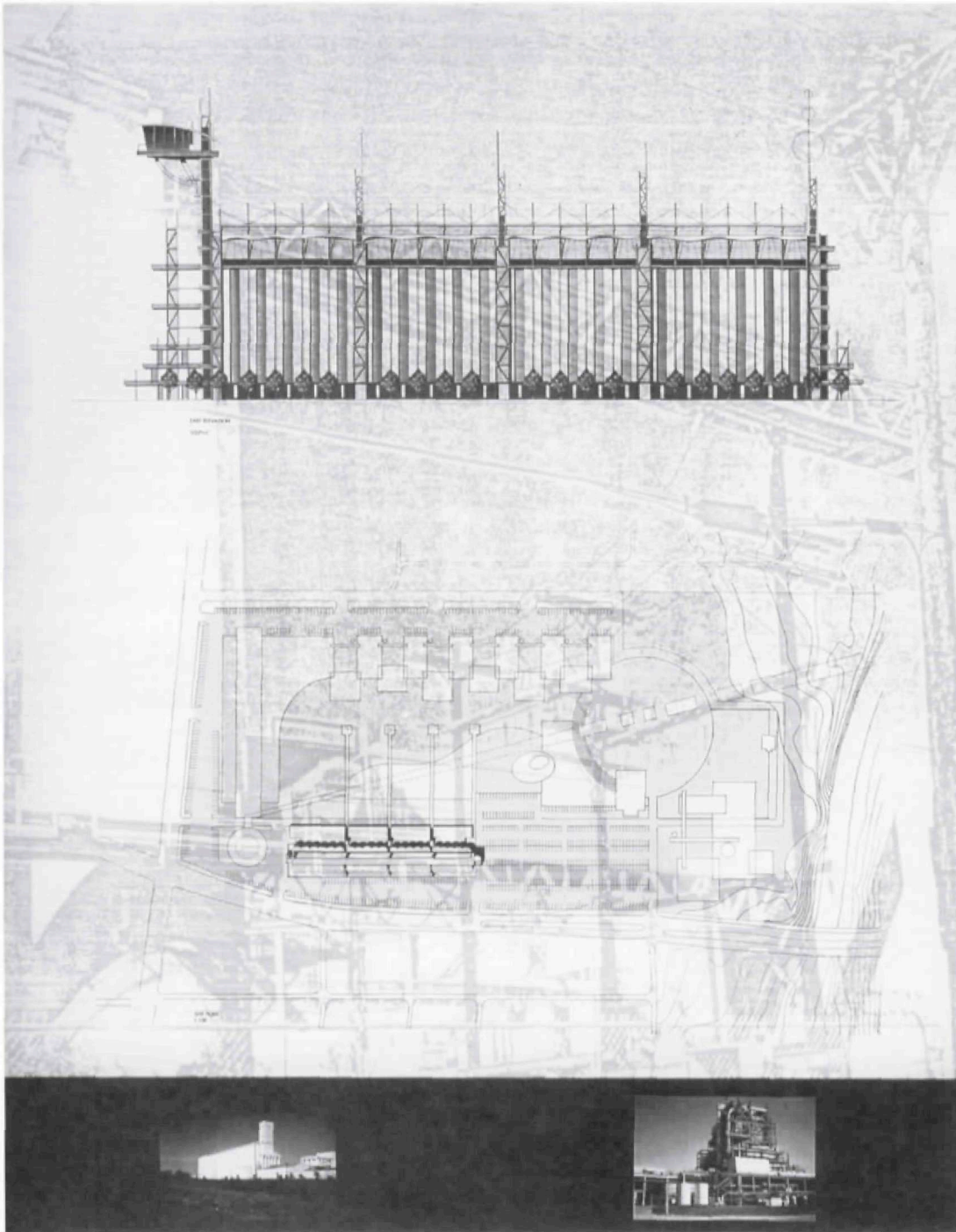


R.I.P., A.R.I.



Karen McMannis, site plan & elevation.

Multiple cylindrical forms

Tall and pale against wide sky

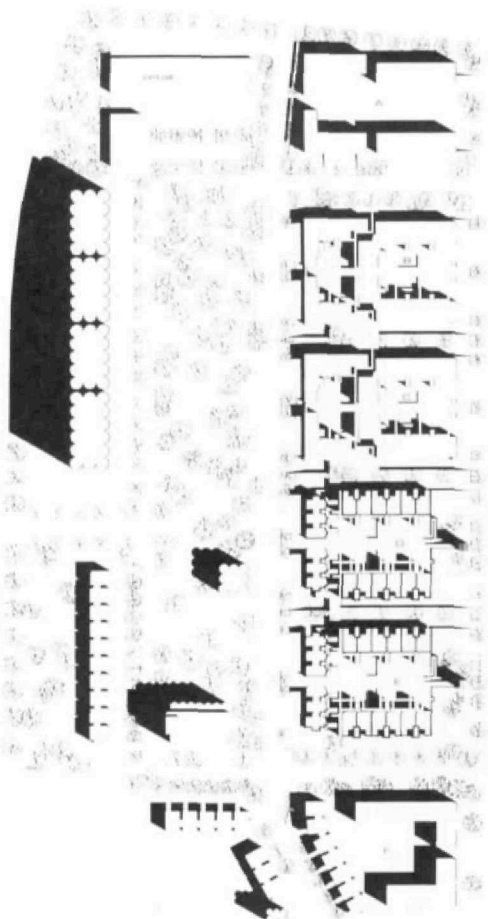
Sensuous shadows

Curving across smooth geometry.

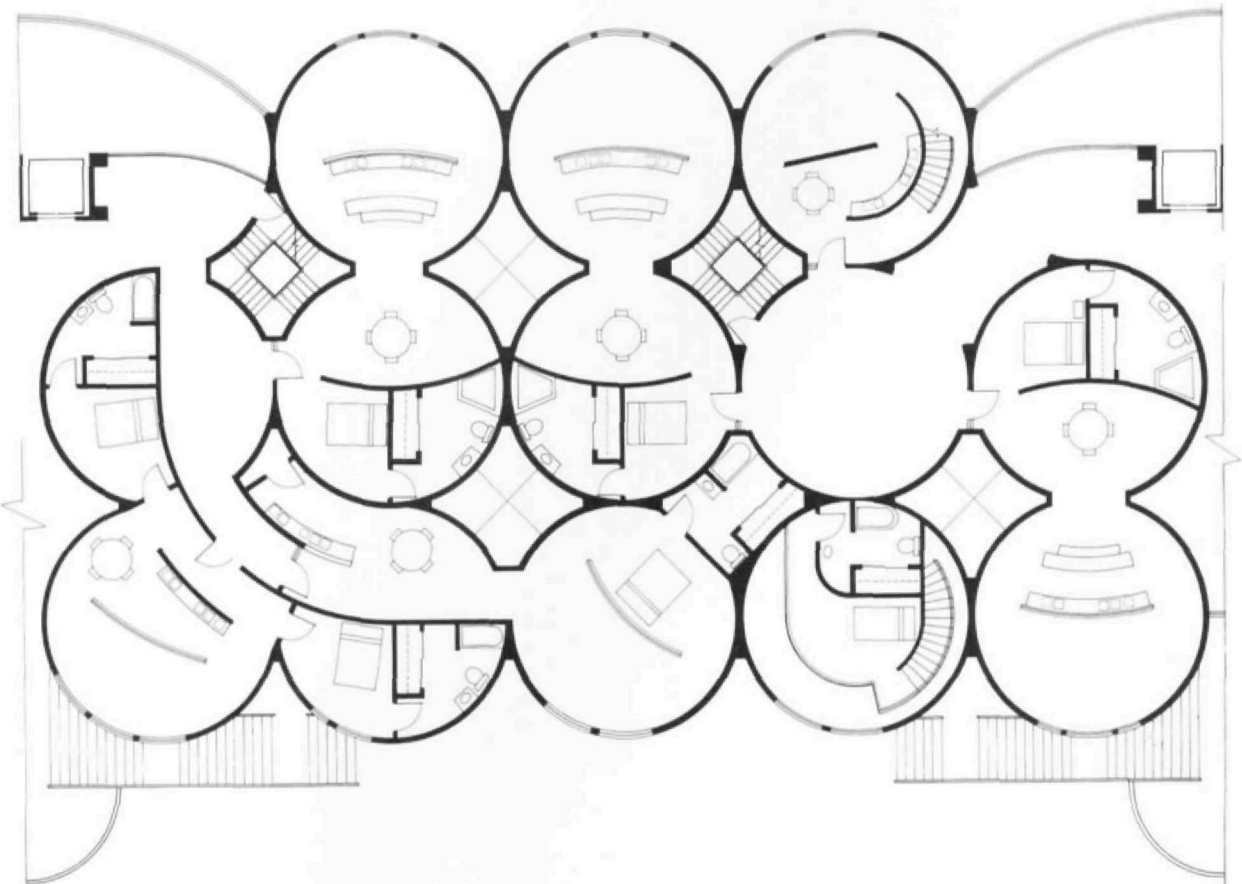
Architects have had a crush on grain elevators ever since Le Corbusier encountered them in the American Midwest of the 1920s. The designer's eye in all of us wept when the American Rice Industries elevators at Memorial Drive and Studemont were demolished last spring. We not only lost a popular icon and landmark, we lost an educational resource as well.

For years architecture professors and their students have been dreaming up adaptive reuse projects at the ARI site incorporating housing, hotels, corporate lofts, mausoleums, dormitories — you name it. The learning possibilities were great, especially for young designers groping to come to terms with monumental scale and repetitive floorplans. The results were often stunning, surprising juries with the unexpected energy a well-crafted adaptive reuse project can encapsulate.

Barry Moore



Geoff Brune, site plan.



Geoff Brune, design for apartments in the rice elevators.